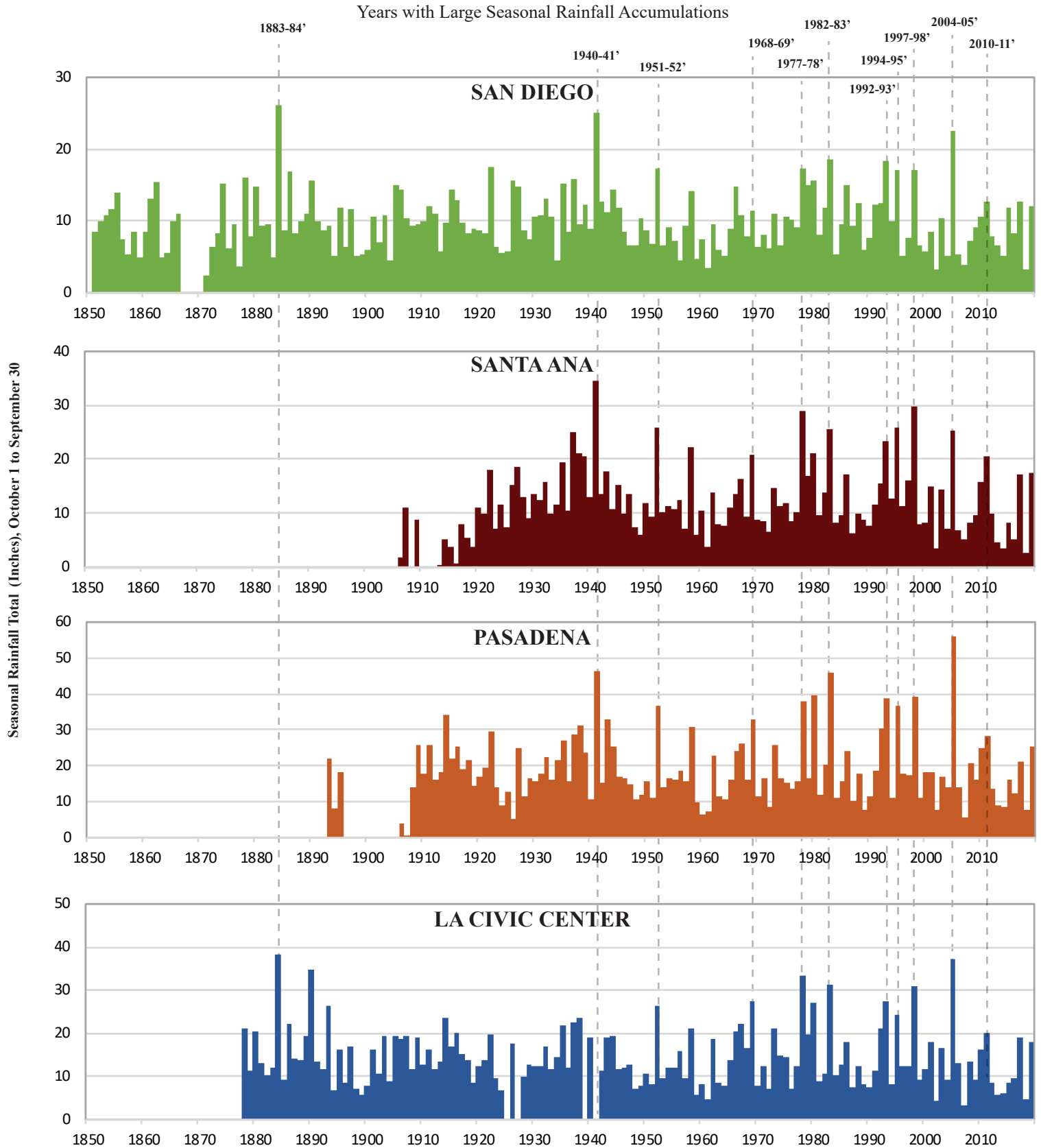




Hydrometeorology

Southern California Historical Seasonal Rainfall Accumulations Reference Guide

Years with Large Seasonal Rainfall Accumulations



Source: NOAA

*2018-2019 accumulation through April 30, 2019

HYDROMETEOROLOGICAL SERVICES

How can we help you?

Earth Forensics employs state-of-the-art technology, expertise, and broad experience to identify and assess hydrometeorological conditions affecting landslides, debris flows, flood damage, and stream/coastal erosion. With access to local and regional meteorological databases EFI can quickly assess weather and RADAR data.

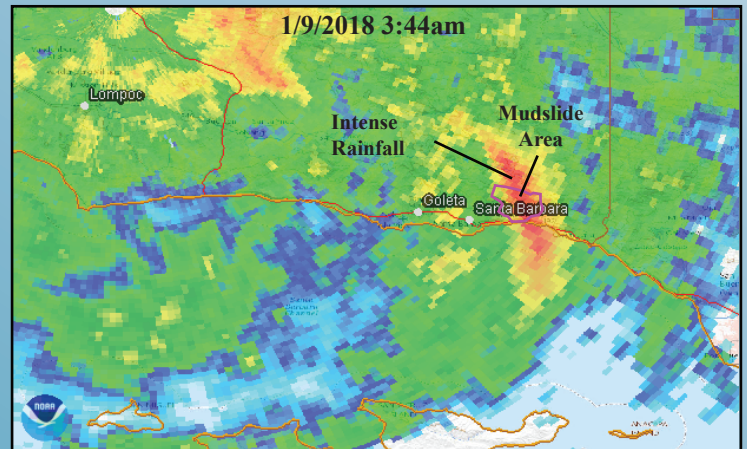
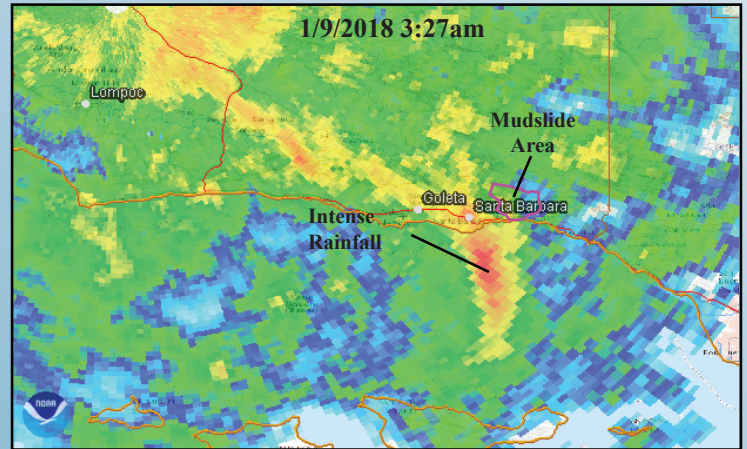
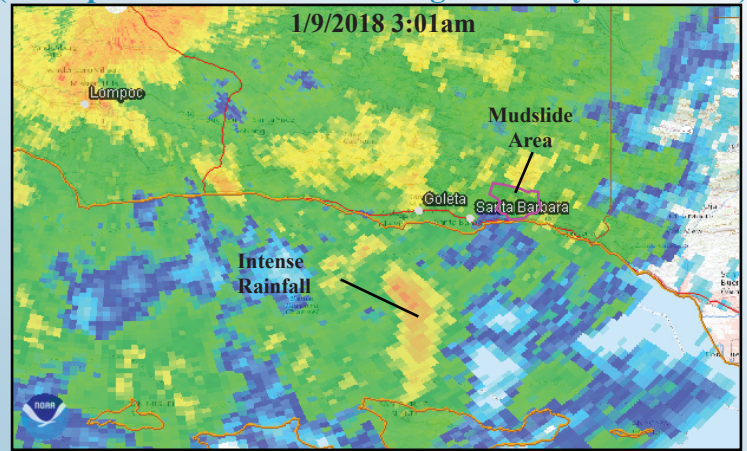
Specialized Services

- NEXRAD Radar analysis, correlation, and animations
- Rainfall/Groundwater interaction and related issues
- Analysis and determination of causation or contributing factors leading to a landslide or flooding event
- In depth analysis of local and regional weather records
- Analysis of event and historical rainfall data
- Rainfall Duration-Frequency analysis

La Conchita Landslide March 1995 (USGS)



Montecito Mudslide Storm RADAR (Example of a short duration-high intensity storm cell)



W. Richard Laton, PhD.
PG (CA, AK, AZ, IL, IN, FL, NC, MN, OR, PA, TX, WA), CHG (CA, WA), CPG, EG
Principal Consultant, Hydrogeologist
wlaton@earthforensics.com
(714) 296-4055



Rene Perez, MS, PG, CHG
Senior Hydrogeologist
rperez@earthforensics.com
(714) 612-3046

12532 Vista Panorama
North Tustin, CA 92705

earthforensics, inc.